

## CM-700 INSULATION BLOWING MACHINES

CM-700S Deluxe is the ultimate **compact and mobile working horse** when it comes to blowing machines. Cutting edge twin scalping augers, rugged design, and simple operation offers a reliable, robust machine with simple maintenance.

The *yes we can attitude* of the installer, or professional contractor, is realized with this little dynamo capable of performing at modest rates with **all fibers** - Cellulose, Fiberglass, Rockwool, Wood fiber and all **applications** - attic, dense packing, sidewall spray-on.

- Require extreme portability with low power requirements.
- Need a lightweight recycle machine for wall spray?
- We've got you covered.
- What a Cool way to start your business.



**Optimal Performance with  
All Types of  
Blowing Insulation Materials**

### **Production Rate:**

Cellulose 431 kg/hour

Fiberglas 182 kg/hour

Rockwool 272 kg/hour

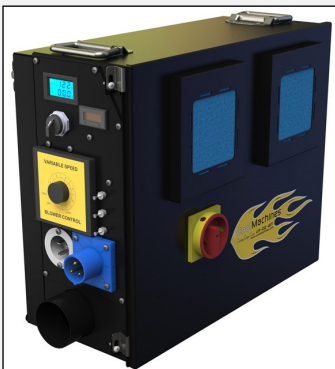


# Features and Benefits



Modular control panel with plug-in receptacles

Option: Long Distance  
Wireless Remote System



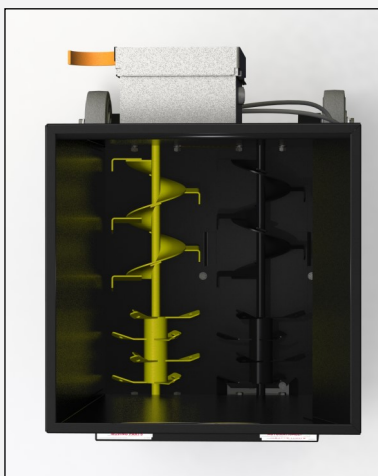
Option: Booster Box—makes density packing easy, when high air capacity is required. The two Blowers starts automatically when feed control is activated.



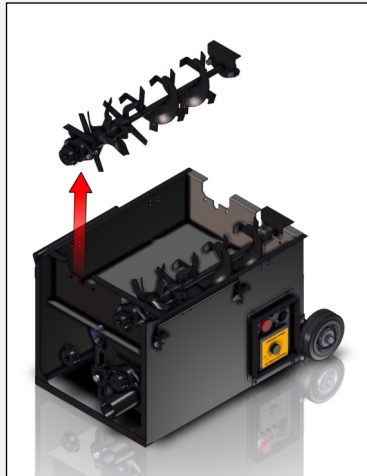
Quick release hopper for easy handling. A trailer is not required for the transportation. Perfect for small insulations tasks.



LED power plugs for quick electrical troubleshooting .



Dual scalping augers enhance fiber conditioning



Quick release dual augers for easy airlock maintenance



Ball Valve bypass allows for use as a Recycle and Standard machine

# CM-700 Deluxe

## Deluxe

The CM-700 is developed for blowing with all types of insulation fibers.

The small size of the machine makes it possible to bring inside buildings and carry in a van.

With Lid/Loading tray you can minimize dust outlets and ease the material handling.

The option with a Booster Box makes it very powerful and allows for heavy dense packing with long range hoses.

Low weight combined with wheel fittings makes it easy to manœuvre and transport.



## Weights and Measures

### Weight:

82 kg with 1 Blower, 230 Volt

### Dimensions (length x width x height):

71 cm x 56 cm x 142.5 cm with Hopper Extension

### Hopper Capacity:

0,3 m3

### 6 Chamber Airlock:

Sizes (diameter x length)

20.3 cm x 25.4 cm, 2.5" / 63 mm output tube

## Technical Data

### Drive Motor:

1/3 hp / 0,22 kW

### Blower Options:

7 amp. - 240 m3/hour, 1 blower

### Airlock pressure:

280 mbar

### Power Requirements:

10 amp., 230 Volt, single input

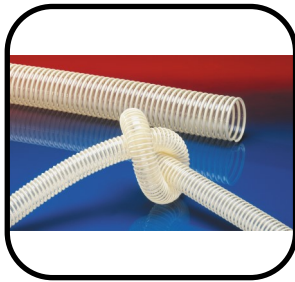




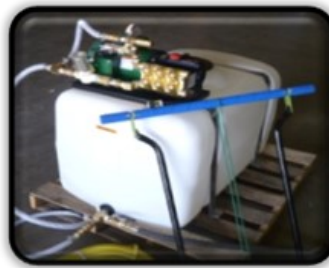
## Machine Accessories



Hose Reels



Hoses & Fittings



Water Tanks



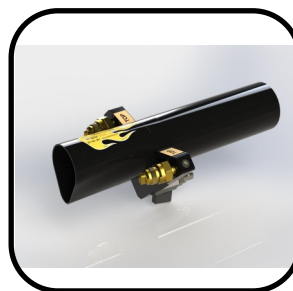
Generators



Water Pumps



Wall Scrubbers



Spray Equipment



Vacuums

Customer Support: Call +45 54 60 90 06 - mail: [info@coolmachineseuropa.com](mailto:info@coolmachineseuropa.com)

# Cool Machines Inc.

Fiber Machines - Cutting Edge Cool



[www.coolmachineseuropa.com](http://www.coolmachineseuropa.com)